



# Michigan Environmental Health Tracking

Department of Health and Human Services

# Storyline

- America's Environmental Health Gap
- Closing the Health Gap
- Building a National Program and Network
- Creating Michigan's Environmental Health Tracking Program
- MiTracking - Building the Web Portal

# America's Environmental Health Gap

- In 2001, the Pew Environmental Health Commission issued the “America's Environmental Health Gap: Why the Country Needs a Nationwide Health Tracking Network” report.
- Findings:
  - Lack of basic information that could document possible links between environmental hazards and chronic disease and conditions (i.e. birth defects, asthma and cancer).
  - Gap Hinders efforts to reduce or eliminate diseases that might be prevented by better managing environmental factors.
  - National cost of chronic disease is staggering:
    - 4 of every 5 deaths annually;
    - 100 million people suffering each year; and
    - \$325 billion in annual healthcare and lost productivity.



# Closing the Health Gap

- Proposed Nationwide Health Tracking Network, which would advance our ability to:
  - Identify populations at risk and respond to outbreaks, clusters and emerging threats;
  - Establish the relationship between environmental hazards and disease;
  - Guide intervention and prevention strategies, including lifestyle improvements;
  - Identify, reduce and prevent harmful environmental risks;
  - Improve the public health basis for policymaking;
  - Enable the public's right to know about health and the environment; and
  - Track progress towards achieving a healthier nation and environment.



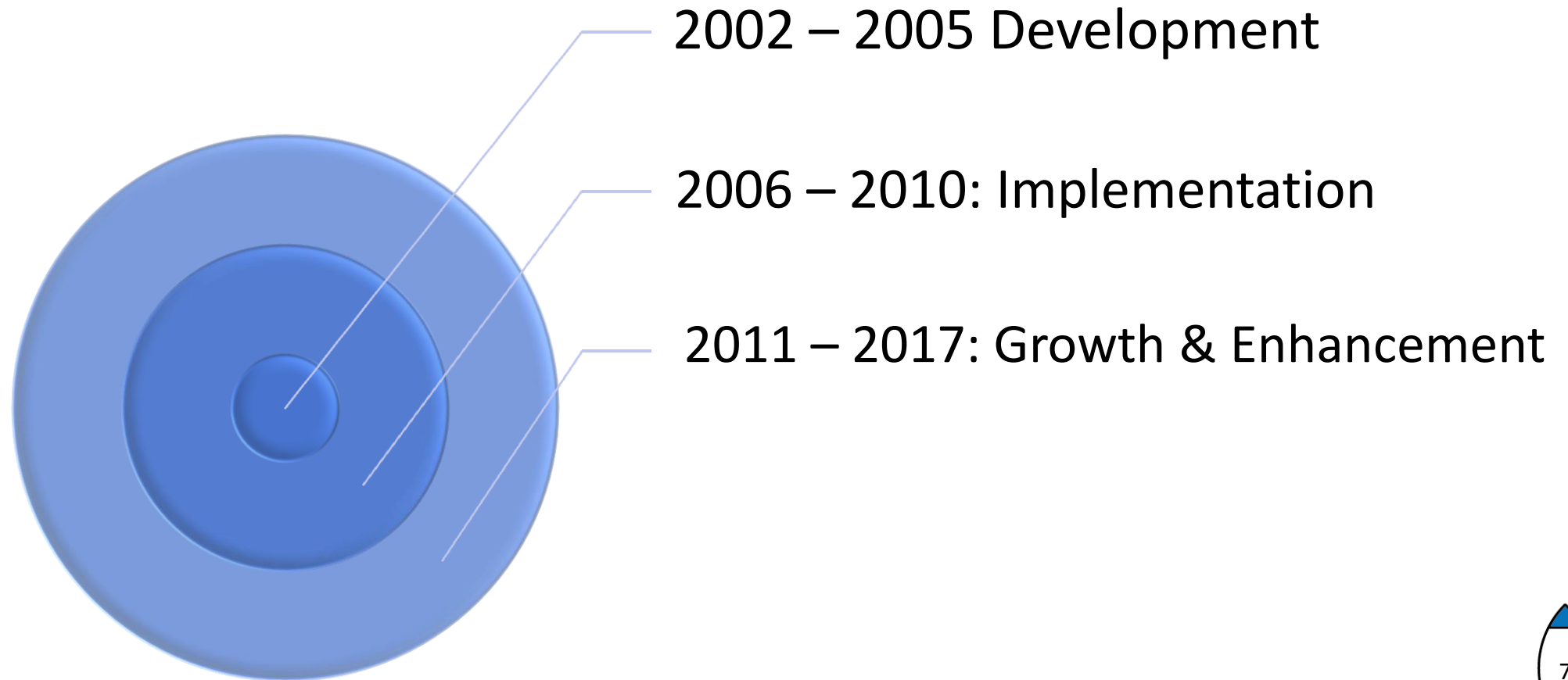
# Closing the Health Gap Cont.

- Five key components of the proposed network:
  - National baseline tracking network for diseases and exposures;
  - Nationwide early warning system for critical environmental health threats;
  - State pilot tracking programs to test diseases, exposures and approaches for national tracking;
  - Federal investigative response capability; and
  - Tracking links to communities and research.
- Annual funding was estimated at \$275 million.

# Building a National Program and Network

---

# Building a National Program and Network



# Building a National Program and Network

- 2002 – 2005: Development
  - In 2002, Congress appropriated funds to CDC to establish the Environmental Public Health Tracking Program
  - In fiscal year 2002, Congress provided CDC with initial funding to:
    - Begin developing a Nationwide Environmental Public Health Tracking Network; and
    - Develop capacity in environmental health within state and local health departments.





# Building a National Program and Network

- 2002 – 2005: Development – Cont.
  - CDC's goal was to develop a tracking system that integrates data about environmental hazards and exposures with data about diseases that are possibly linked to the environment.
  - This system allows the public and federal, state, and local agencies to:
    - Monitor and distribute information about environmental hazards and disease trends;
    - Advance research on possible linkages between environmental hazards and disease; and
    - Develop, implement, and evaluate regulatory and public health actions to prevent or control environment-related diseases.



# Building a National Program and Network

- 2002 – 2005: Development – Cont.
  - Planning for the network was a priority for the CDC.
    - Provided opportunity to address some of the most challenging problems facing local, state, and national public health leaders.
    - From the outset, this activity has involved substantial collaboration between the CDC and public health and environmental partners.



# Building a National Program and Network

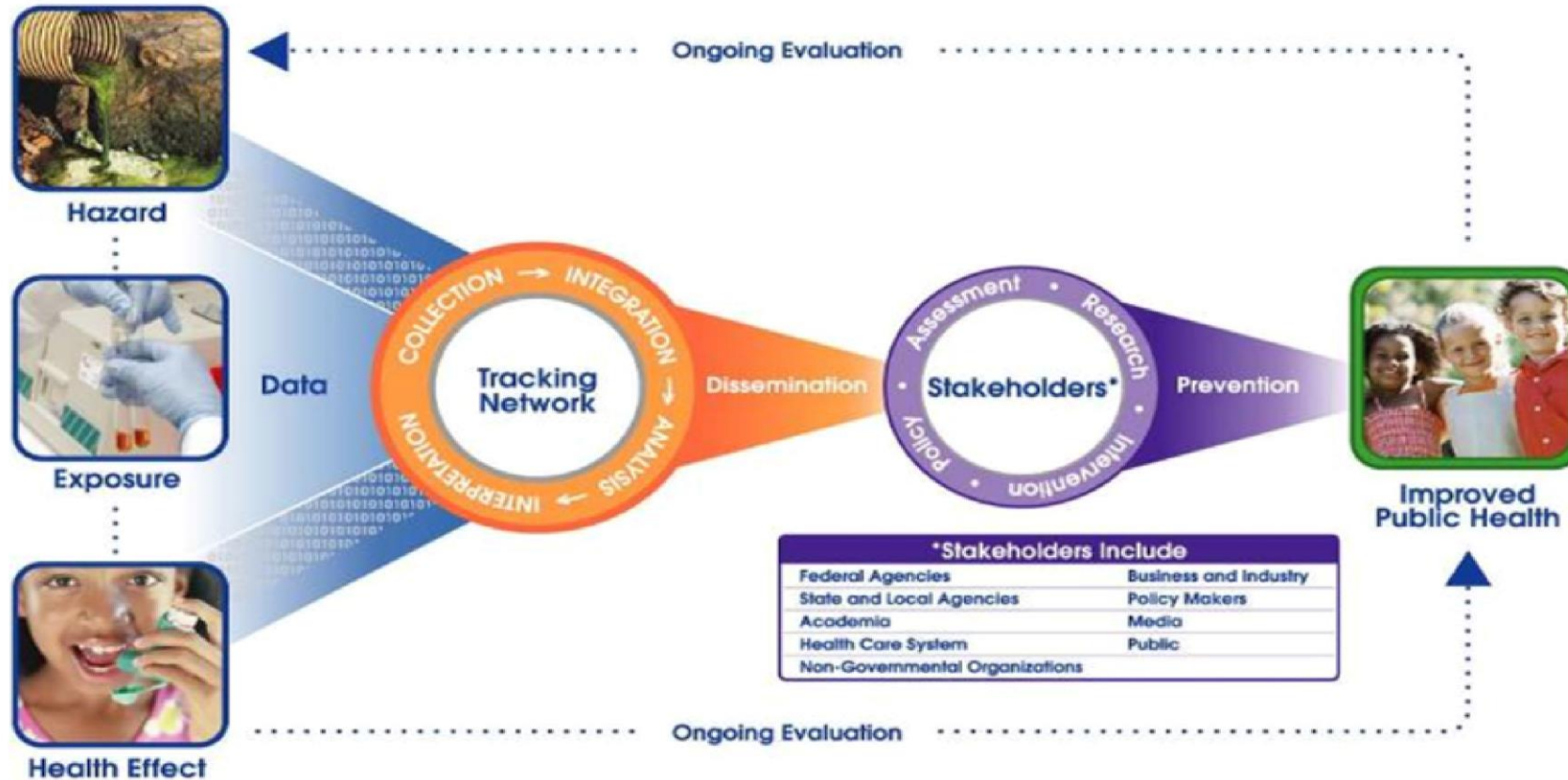
The screenshot displays the CDC National Environmental Public Health Tracking Network interface. The interface is divided into five steps for data selection:

- STEP 1: SELECT YOUR CONTENT**
  - Air Quality
  - Ozone - Days Above Regulatory
  - Number of days with maximum 8
- STEP 2: SELECT GEOGRAPHY TYPE**
  - State By County
- STEP 3: CHECK ONE GEOGRAPHY**
  - Alabama
  - Arizona
  - Arkansas
  - California
  - Colorado
  - Connecticut
  - Delaware
  - District of Columbia
  - Florida
  - Georgia
  - Idaho
  - Illinois
  - Indiana
  - Iowa
  - Kansas
- STEP 4: SELECT YEAR(S)**
  - All Years
  - 2012
  - 2011
  - 2010
  - 2009
  - 2008
  - 2007
  - 2006
  - 2005
  - 2004
  - 2003
  - 2002
- STEP 5: SELECT ADVANCED OPTIONS**
  - No Advanced Options

At the bottom of the selection panel are buttons for "Disclaimer", "Clear Selections", and a green "GO" button. The background is a map of the Great Lakes region with a legend on the left showing color-coded data ranges: 0, > 0 - 2, > 2 - 5, > 5 - 11, > 11 - 34, and Undefined.

- 2006 – 2010: Implementation
  - Focused on launching national and state networks through building national infrastructure, workforce, and collaborations on data linkage.
  - In 2009, the online Environmental Public Health Tracking Network was launched.

# ENVIRONMENTAL PUBLIC HEALTH TRACKING

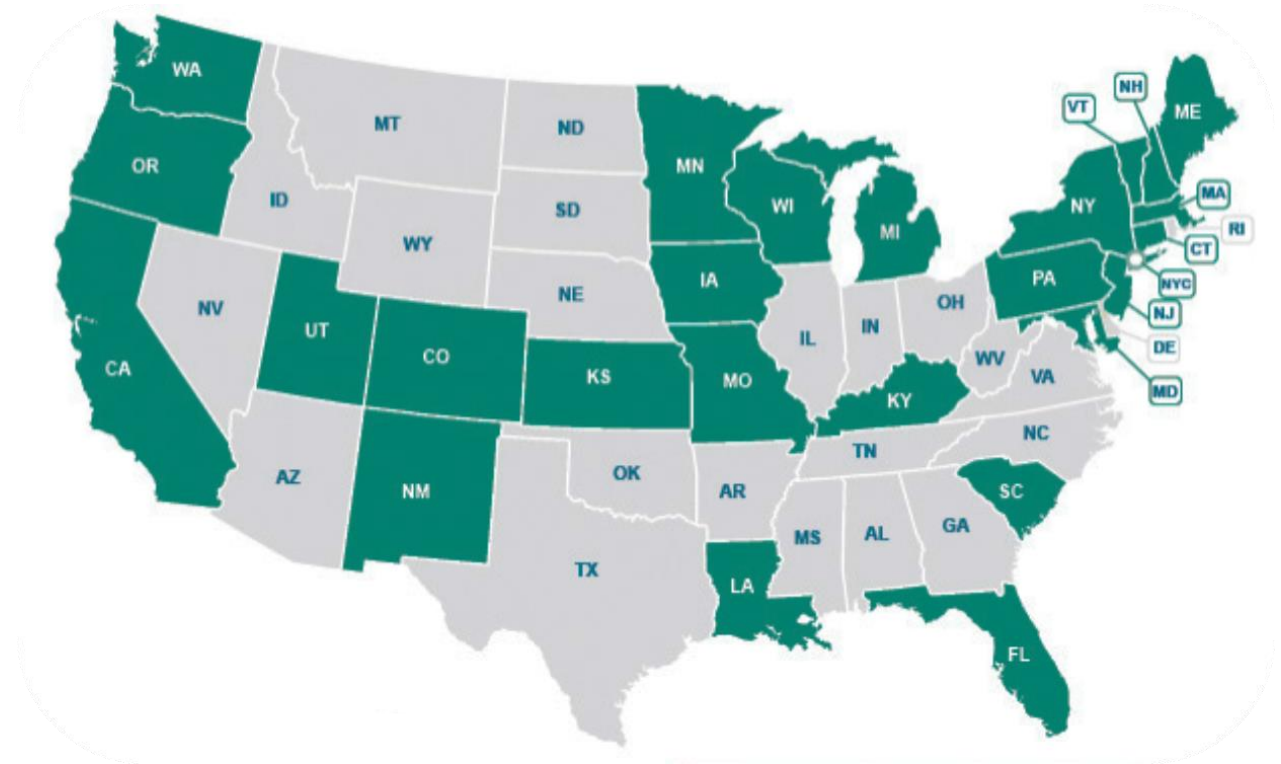


DEPARTMENT OF HEALTH AND HUMAN SERVICES  
CENTERS FOR DISEASE CONTROL AND PREVENTION  
SAFER • HEALTHIER • PEOPLE



# Building a National Program and Network

- 2011 – 2017: Growth & Enhancement
  - Focused on:
    - New data
    - New functionality
    - New states
      - Michigan was one of the new states
    - New data-use activities
    - Incorporating changes as a result of evaluation
  - 10<sup>th</sup> anniversary celebrated



# Creating Michigan's Environmental Health Tracking Program

---

# Who's Responsible?

- Department of Health and Human Services (DHHS) > Division of Environmental Health (DEH) > Environmental Health Surveillance Section
  - Addresses health concerns related to environmental and workplace hazards in Michigan.
  - Uses the tools of public health surveillance, epidemiology, and intervention.
- 2014, became one of the two newest states to receive funding and join the National Environmental Public Health Tracking Network.



# CDC's Requirements

- Use the existing CDC Tracking Network as a model.
- Develop an interactive public web portal that provides access to Michigan health and environmental data.
- Provide information and searchable data to users in support of three goals:
  - Informing public health practice, policy, decisions, and interventions at the state and local level.
  - Educating the public regarding the relationships between the environment and health.
  - Promoting research into possible connections between environmental hazards and adverse health outcomes.



# Why Michigan?

- Michigan has a long history of industrialization resulting in environmental health hazards and a greater burden of chronic disease than that of the United States overall.
- The distribution of environmental contaminants and their potential health impacts are an ongoing concern to Michigan's citizens.
- Until now, Michigan has lacked an integrated system to track both environmental health hazards and human health outcomes.

# Michigan's Approach

- DEH worked to compile data for the Nationally Consistent Data and Measures (NCDMs).
  - NCDMs are the core, standardized environmental and public health measures available on all tracking portals.
- DEH needed to find a partner to help develop the required interactive public web portal.

# MiTracking - Building the Web Portal

---

# Request for Proposals

- Functional Requirements:
  - Interface and interact with the Michigan Tracking web pages;
  - Enable state administrative users to upload data;
  - Enable public users to query data;
  - Produce and display downloadable query results in maps, charts and tables;
  - Interface with the Michigan Department of Technology, Management, and Budget (DTMB) Center for Shared Solutions (CSS) ArcGIS; and
  - Operate in the DTMB environment, on DTMB servers with DTMB supported applications.

# Choosing a Technology Partner

- Contractor Qualifications:
  - Five (5) years demonstrated experience in developing and implementing public web pages.
  - Three (3) years demonstrated experience managing and presenting data.
  - Three (3) years demonstrated experience working with GIS technology.
  - Three (3) past or current projects with state, county, or local government agencies as clients.

# Proposed Solution

- Two distinct applications:
  - Public User Portal
    - Provides the functionality to perform measure searches, view and print datasets, and render interactive maps.
  - Administrative User Portal
    - Provides the functionality to upload and manage measure datasets as well as other administrative tasks.
- Project Timeline
  - 5 months
- Project Cost
  - \$183,000



Age of Housing



Air Quality



Asthma



Cancer



Carbon Monoxide Poisoning



Demographics



Drinking Water



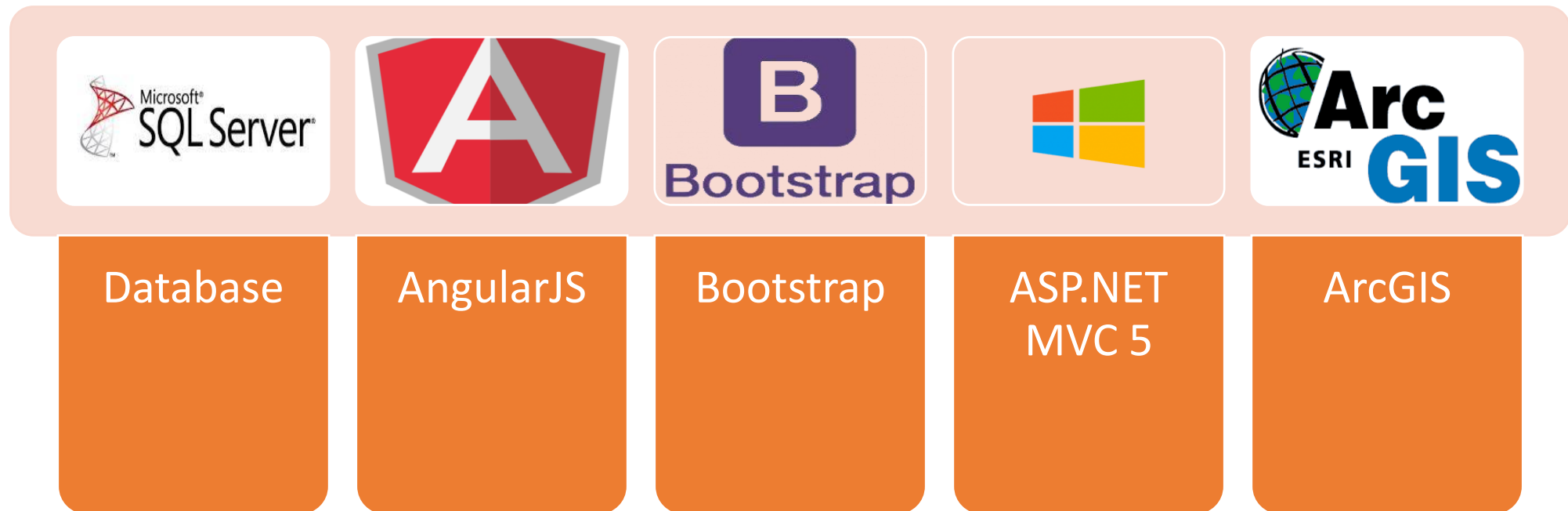
Heart Attacks



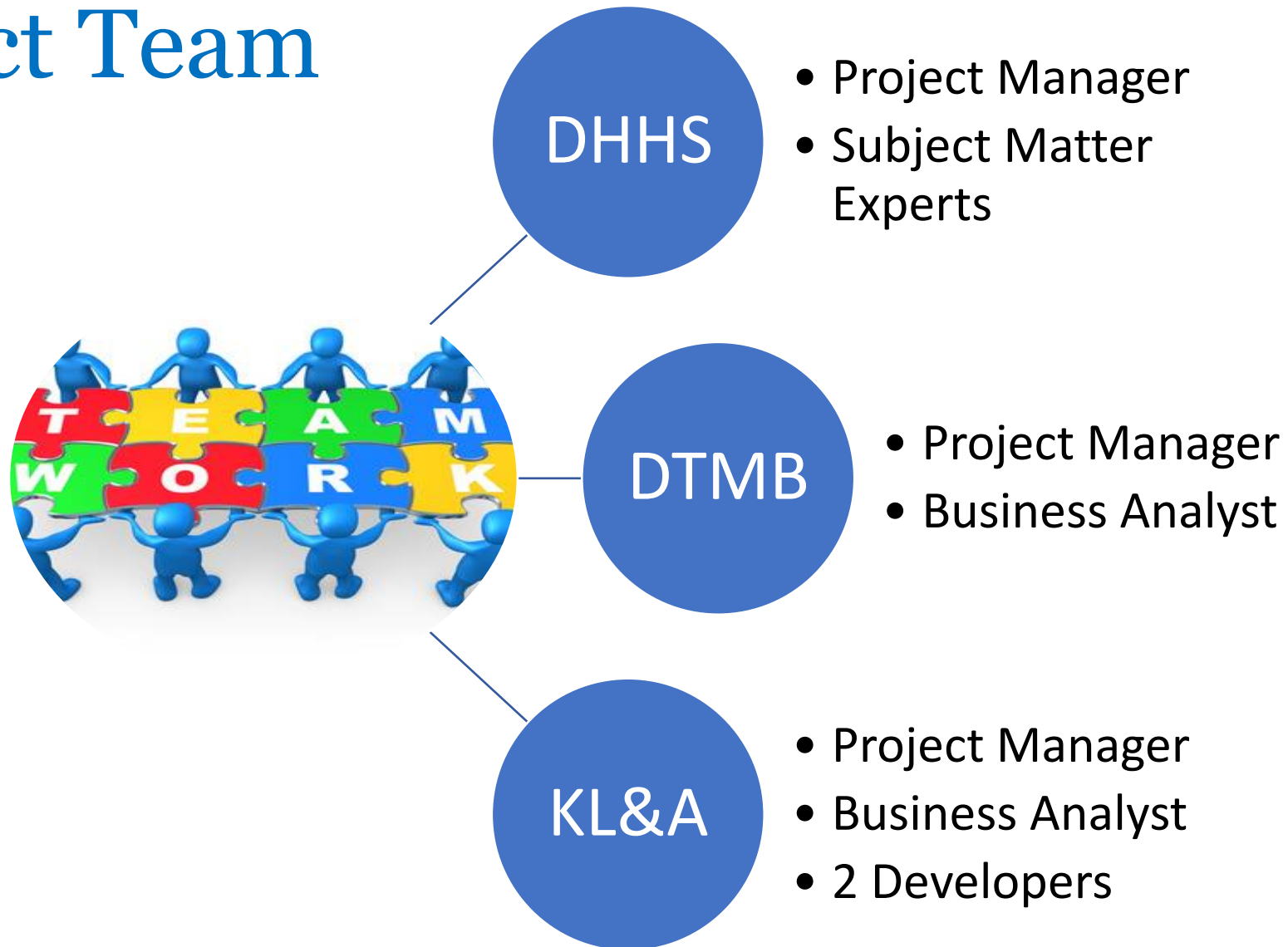
Heat Illness

# Technical Overview

- Hosted on DTMB Infrastructure
- Technology Stack



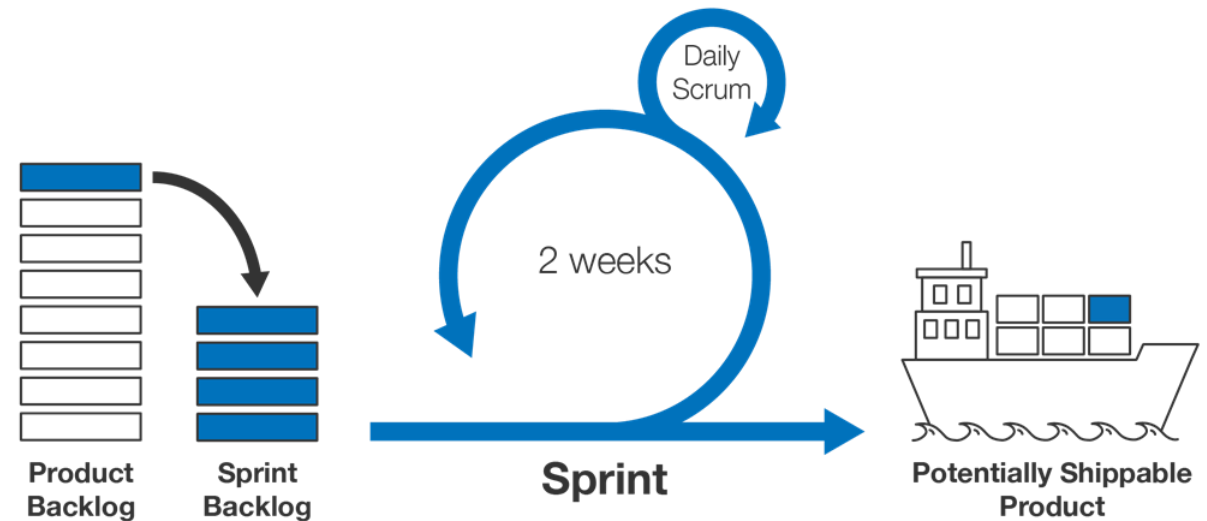
# Project Team





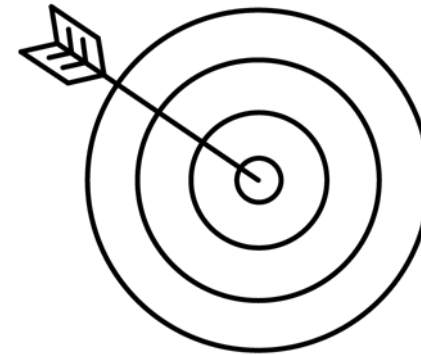
# Project Approach

- Agile (Scrum)
  - 2 week Sprints
  - Daily Scrum
  - Planning, Review and Retros
- SUITE
- Jira and Jama



# Success Factors

- Team members fully committed to the Scrum process
- Clearly defined vision and goals based on detailed wireframes
- e-Michigan involvement early and throughout the project
- Working with CSS to integrate ArcGIS



# Demonstration

---

# Questions and Comments

---

# Contact Us

---

For more information, please contact any of the following:

Martin Tompkins: (517) 202-0329

[m.tompkins@kunzleigh.com](mailto:m.tompkins@kunzleigh.com)

Kim Ivey: (248) 330-8801

[k.ivey@kunzleigh.com](mailto:k.ivey@kunzleigh.com)